

© Investment and Development Agency of Latvia, 2023

vis@kurzeme.lv, www.kurzeme.lv

+371 29334403

Bartozes iela 5, Kuldīga

kurzemes tourism association

Kurzeme - the surprising westernmost region of Latvia

Named after the seafaring Kurši or Curonians, Kurzeme to the development of its quaint fishing settlements and to the development of its quiet fishing settlements and its beaches for rejuvenating holidays.

The picturesque town of Pāvilosta is a magnet for surfers and fellow adventure seekers, while smaller villages like Ķurkaine and Mazīre are sleepier, as if designed for relaxation.

Kurzeme is distinguished by unique rural farms, with white churches visible from afar, while city and rural museums stand out with their appealing stores. Kurzeme is delicious. Here, you can taste both rural delights and coastal treats. Kurzeme is steeped in tradition and created with modern flavors.

KURZEME West Latvia Tourism map

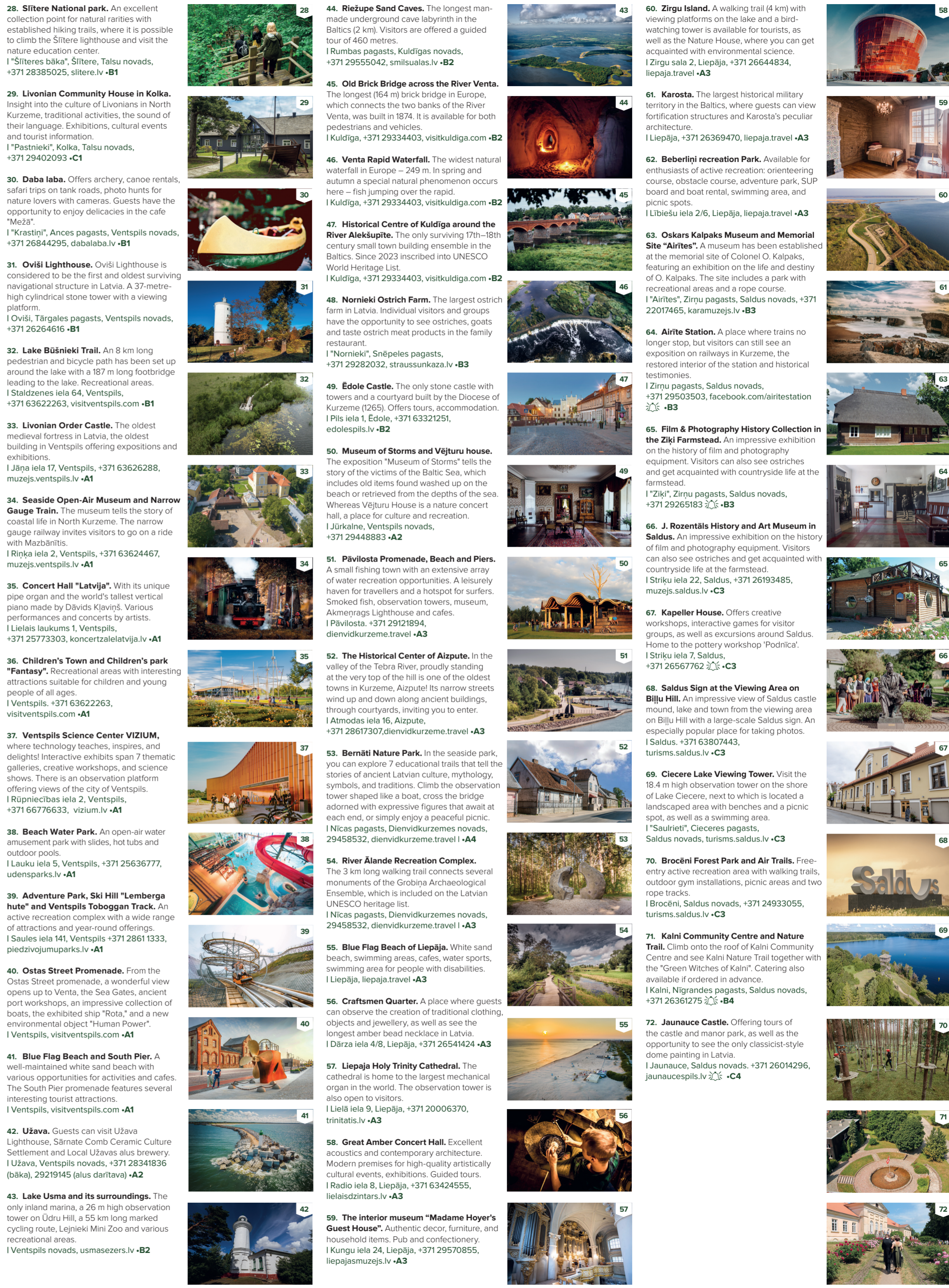
KURZEME



Tourism objects

- Ķemeri National Park.** A nature reserve where visitors can explore beautiful bogs, forests and meadows. The most popular nature trails are the Great Ķemeri Bog Boardwalk, the Green Dune, the Ķanjeris Hillfort, and the Lake Ķanjeris Reed Plankway, as well as the Dunduri Meadows. Ķemeri, Tukuma novads, +371 67730078, kemernationalparks.lv •D3
- Valguma pasaule.** A place where you can explore the healing powers of the forest by walking the Barefoot Trail, admire nature in large-format photographs on the Art Trail, and free your mind in one of the mazes. The complex includes a hotel and restaurant. ĻValguma pasaule", Smārdes pagasts, Tukuma novads, +371 63181222, 29414022, valgumapasaule.lv •D2
- Šlokenbeka Manor.** One of the few examples of a fortified medieval manor in the Baltics and the only one in Latvia that has survived to this day. The Latvian Road Museum is located in the manor. ĻMilzkalne, Tukuma novads, +371 29904447, 63182354, slokenbeka.lv, celumuzejs.lv •D2
- Durbe Castle.** Landscape park created at the beginning of the 19th century, where architectural monuments such as a stone bridge and a rotunda have been preserved. ĻMažā Parka iela 7, Tukums, +371 26305946, tukumamuzejs.lv •C2
- Tukums.** A city of roses, gardens and art. Unique with its Art Museum and collection of Latvian paintings, the "Castle Tower" – one of the smallest city museums in Latvia, and various creative workshops, as well as the "Rose Route". ĻTukums, +371 28311557, visittukums.lv •C2
- Jaunmokas Palace.** The newest Latvian palace. See the restored English Art Nouveau forest salons, climb the palace tower, visit the Forest Museum and the Latvian Signs Centre. Hotel and restaurant available. ĻJaunmokas, Tukuma novads, +371 63107125, jaunmokupils.lv •C2
- Abavas Winery.** Latvia's largest winery offering wine tasting tours, guests also have the option to stop by and purchase wine. Ļ"Kalējkrāmi", Tukuma novads, +371 26630022, abavas.lv •D3
- The Upside-Down House in Smarde.** A place where you can experience unprecedented feelings in a house built upside down. Enrich your sense of adventure with the Mirror Maze, Tornado Tunnel, and Mini Golf. Ļ"Guntīnas", Smārde, Smārdes pagasts, Tukuma novads, +371 28808606, apgrieztaamaja.lv •D2
- Fairy Tale Museum in Džūkste.** The Museum invites visitors to listen to fairy tales, as well as tell their own, watch a puppet show, see exhibitions and create their own fairy tale characters. ĻLancenieku skola, Tukuma novads, +371 26513314, tukumamuzejs.lv •D3
- Medieval Jaunpils.** It includes the medieval Jaunpils Castle and the surrounding complex – a church, a watermill and the Swedish Wall, behind which operates the Medieval Courtyard "Niedru līja", which offers various medieval entertainment opportunities. ĻJaunpils, Tukuma novads, +371 26101458, 27052824, jaunpilsipils.lv, viduslaikos.lv •C3
- The Old Town of Kandava.** Narrow, romantic cobblestone streets wind through the ancient city architecture. The Old Town promenade features sculptures, environmental objects, special lanterns, and Poetry Walls adorned with verses about Latvia. ĻŪdens iela 2, Kandava, +371 28356520, kandava.lv •C2
- Viesatas Upesokli Nature Trail.** Exploring trail, where you can get to know the forest at different times of its development and organise a picnic in well-equipped picnicking spots. The trail ends at Spumņu Rock – one of the Secular Stones. ĻIrlavas pagasts, Tukuma novads, •C3
- Kurzeme Fortress Museum.** You can see an exposition on the history of World War I and II, a Yi-2 airplane, an armoured carrier, a tank and walk through restored historic trenches and bunkers. ĻSkolas iela 8a, Zante, Tukuma novads, +371 29442311, kurzemescioteksnis.viss.lv •C3

- Rose garden "Roziņas".** The garden features an extensive collection of roses with rose varieties from different European countries. Guests have the opportunity to see the garden and plant nursery, consult experts on the art of growing roses, as well as purchase rose seedlings. Ļ"Roziņas", Sēmes pagasts, Tukuma novads, +371 26469604, dailaroszes.lv •C2
- Pure Chocolate Museum.** In this museum guests can learn all about the history, production, processing and use of chocolate, as well as Pure Chocolate products, which can be bought in the museum shop. ĻPūre - 9, Pūre, Tukuma novads, +371 22100042, purechocolate.lv •C2
- Abava Valley Nature Park.** The territory features outstanding picturesque scenery – mosaic landscapes of valleys, meadows and slopes. Kandava Old Town – a peculiar town with many hills and the oldest stone bridge in Latvia. ĻKandava, +371 28396830, kandava.lv •C2
- Sabīle Wine Hill.** Recorded in the Guinness Book of Records as the northernmost vineyard. Guests have the opportunity to plant their own grape vine. You can also find several wineries in the vicinity of Sabīle. Tours are available. ĻKaina iela, Sabīle, Talsu novads, +371 27841827, visittalsi.com •C2
- Pedvāle Art Park.** A scenic park featuring environmental art works with long walking trails. Firskpedvāle Manor houses an international artist residence. ĻPedvāle, Talsu novads, +371 29133374, pedvale.lv •C2
- Rideļi Mill.** At the Mill Museum you can learn more about the cultivation of cereal crops, how and with what tools flour is made from grain. The complex also features a pub and a small guest house. ĻRideļu dzirnavas, Tukuma novads, +371 26536532, rideludzirnavas.lv •C2
- Pastariņš Museum.** Get to know what life was like in a North Kurzeme farmstead at the end of the 19th century and the first half of the 20th century. The museum will be especially interesting for families with children. Ļ"Bisnieki", Tukuma novads, +371 28651091, tukumamuzejs.lv •C2
- Lielzieltiņi Observatory.** The most suitable place in Latvia to begin your star exploration trip! Here you can feel the greatness of the heavens and come to the realisation that humanity is nothing but a tiny speck in the vastness of the cosmos. Ļ"Lielzieltiņi", Talsu novads, +371 29209002, deepskyseeing.site •C2
- Lake Engure Nature Park.** See wild horses and cows, as well as the Orchid Trail. There are also several bird-watching towers on the shores of this lagoon-type lake. ĻBērziems, Tukuma novads, +371 29474420, eedpf.lv •C2
- Nurmuiža Manor.** The castle premises are considered to be one of the most effective examples of neoclassical interiors among Latvian castles. Guide services, restaurant, accommodation. ĻNurmuiža, Talsu novads, +371 28785676, nurmuizaspils.com •C2
- Art Blooms in Talsi Walking Tour.** Reproductions of paintings in the urban environment, which allows to compare the former landscape with the present. 5 of the reproductions are animated. ĻLiela iela 19/21, Talsi, +371 26469057, visittalsi.com •C2
- Talsi Creative Yard.** Artisans, photographers, musicians, and artists inhabit the courtyard of the Talsi Folk House. The roof terraces and courtyard serve as excellent venues for concerts, markets, and other events. ĻLiela iela 19/21, Talsi, +371 27842064, tautasnamis.lv •C2
- Laumas Nature Recreation Park.** A recreation park with an extensive list of activities. Discover the secrets of bee and bird life, play disc golf and enjoy nature. Ļ"Laumas", Talsu novads, +371 29477731, laumas.lv •C1
- Dundaga Palace.** The largest and oldest medieval palace in North Kurzeme – built in the 13th century. The palace offers tours, exhibitions, banquet halls, accommodation. ĻPils iela 14, Dundaga, +371 29444395, dundagaspils.lv •B1
- Sītere National park.** An excellent collection point for natural rarities with established hiking trails, where it is possible to climb the Sītere lighthouse and visit the nature education center. Ļ"Šīteres bāka", Sītere, Talsu novads, +371 28385025, sitere.lv •B1
- Livonian Community House in Kolka.** Insight into the culture of Livonians in North Kurzeme, traditional activities, the sound of their language. Exhibitions, cultural events and tourist information. Ļ"Pastnieki", Kolka, Talsu novads, +371 29402093 •C1
- Daba laba.** Offers archery, canoe rentals, safari trips on tank roads, photo hunts for nature lovers with cameras. Guests have the opportunity to enjoy delicacies in the cafe "Mežā". Ļ"Krašiņi", Ances pagasts, Ventspils novads, +371 26844295, dabalaba.lv •B1
- Oviši Lighthouse.** Oviši Lighthouse is considered to be the first and oldest surviving navigational structure in Latvia. A 37-metre-high cylindrical stone tower with a viewing platform. ĻOviši, Tārgales pagasts, Ventspils novads, +371 26264616 •B1
- Lake Būšnieki Trail.** An 8 km long pedestrian and bicycle path has been set up around the lake with a 187 m long footbridge leading to the lake. Recreational areas. ĻStaldzenes iela 64, Ventspils, +371 2622263, visitventspls.com •B1
- Livonian Order Castle.** The oldest medieval fortress in Latvia, the oldest building in Ventspils offering exhibitions and exhibitions. ĻJāņa iela 17, Ventspils, +371 63626288, muzejs.ventspls.lv •A1
- Seaside Open-Air Museum and Narrow Gauge Train.** The museum tells the story of coastal life in North Kurzeme. The narrow gauge railway invites visitors to go on a ride with Mazbānītis. ĻRiņķa iela 2, Ventspils, +371 63624467, muzejs.ventspls.lv •A1
- Concert Hall "Latvija".** With its unique pipe organ and the world's tallest vertical piano made by Dāvids Klaviņš. Various performances and concerts by artists. ĻLielais laukums 1, Ventspils, +371 25773303, koncertzalelatvija.lv •A1
- Children's Town and Children's park "Fantasy".** Recreational areas with interesting attractions suitable for children and young people of all ages. ĻVentspils, +371 63622263, visitventspls.com •A1
- Ventspils Science Center VIZIUM.** where technology teaches, inspires, and delights! Interactive exhibits span 7 thematic galleries, creative workshops, and science shows. There is an observation platform offering views of the city of Ventspils. ĻRīpniecības iela 2, Ventspils, +371 66776633, vizium.lv •A1
- Beach Water Park.** An open-air water amusement park with slides, hot tubs and outdoor pools. ĻLauku iela 5, Ventspils, +371 25636777, udensparks.lv •A1
- Adventure Park, Ski Hill "Lemberga hute" and Ventspils Toboggan Track.** An active recreation complex with a wide range of attractions and year-round offerings. ĻSaules iela 141, Ventspils +371 2861 1333, piedzivojumuparks.lv •A1
- Ostas Street Promenade.** From the Ostas Street promenade, a wonderful view opens up to Venta, the Sea Gates, ancient port workshops, an impressive collection of boats, the exhibited ship "Rota", and a new environmental object "Human Power". ĻVentspils, visitventspls.com •A1
- Blue Flag Beach and South Pier.** A well-maintained white sand beach with various opportunities for activities and cafes. The South Pier promenade features several interesting tourist attractions. ĻVentspils, visitventspls.com •A1
- Užava.** Guests can visit Užava Lighthouse, Sārnate Comb Ceramic Culture Settlement and Local Užavas alus brewery. ĻUžava, Ventspils novads, +371 28341836 (bāka), 29219145 (alus darītava) •A2
- Lake Usma and its surroundings.** The only inland marina, a 26 m high observation tower on Ūdru Hill, a 55 km long marked cycling route, Lejnīki Mini Zoo and various recreational areas. ĻVentspils novads, usmasezers.lv •B2
- Riežupe Sand Caves.** The longest man-made underground cave labyrinth in the Baltics (2 km). Visitors are offered a guided tour of 460 metres. ĻRumbas pagasts, Kuldīgas novads, +371 29555042, smilsuvalas.lv •B2
- Old Brick Bridge across the River Venta.** The longest (164 m) brick bridge in Europe, which connects the two banks of the River Venta, was built in 1874. It is available for both pedestrians and vehicles. ĻKuldīga, +371 29334403, visitkuldiga.com •B2
- Venta Rapid Waterfall.** The widest natural waterfall in Europe – 249 m. In spring and autumn a special natural phenomenon occurs here – fish jumping over the rapid. ĻKuldīga, +371 29334403, visitkuldiga.com •B2
- Historical Centre of Kuldīga over the River Alekšupīte.** The only surviving 17th–18th century small town building ensemble in the Baltics. Since 2023 inscribed into UNESCO World Heritage List. ĻKuldīga, +371 29334403, visitkuldiga.com •B2
- Nornieki Ostrich Farm.** The largest ostrich farm in Latvia. Individual visitors and groups have the opportunity to see ostriches, goats and taste ostrich meat products in the family restaurant. Ļ"Nornieki", Snēpeles pagasts, +371 29282032, straussunkaza.lv •B3
- Ēdole Castle.** The only stone castle with towers and a courtyard built by the Diocese of Kurzeme (1265). Offers tours, accommodation. ĻPils iela 1, Ēdole, +371 63321251, edolespils.lv •B2
- Museum of Storms and Vējture House.** The exposition "Museum of Storms" tells the story of the victims of the Baltic Sea, which includes old items found washed up on the beach or retrieved from the depths of the sea. Whereas Vējture House is a nature concert hall, a place for culture and recreation. ĻJūrkāle, Ventspils novads, +371 29448883 •A2
- Pāvilosta Promenade, Beach and Piers.** A small fishing town with an extensive array of water recreation opportunities. A leisurely haven for travellers and a hotspot for surfers. Smoked fish, observation towers, museum, Akmenragis Lighthouse and cafes. ĻPāvilosta, +371 29121894, dienvidkurzeme.travel •A3
- The Historical Center of Aizpute.** In the valley of the Tebra River, proudly standing at the very top of the hill is one of the oldest towns in Kurzeme, Aizpute! Its narrow streets wind up and down along ancient buildings, through courtyards, inviting you to enter. ĻAtmodas iela 16, Aizpute, +371 28617307, dienvidkurzeme.travel •A3
- Bernāti Nature Park.** In the seaside park, you can explore 7 educational trails that tell the stories of ancient Latvian culture, mythology, symbols, and traditions. Climb the observation tower shaped like a boat, cross the bridge adorned with expressive figures that await at each end, or simply enjoy a peaceful picnic. ĻNicas pagasts, Dienvidkurzemes novads, 29458532, dienvidkurzeme.travel •A4
- River Ālande Recreation Complex.** The 3 km long walking trail connects several monuments of the Grobina Archaeological Ensemble, which is included on the Latvian UNESCO heritage list. ĻNicas pagasts, Dienvidkurzemes novads, 29458532, dienvidkurzeme.travel •A3
- Blue Flag Beach of Liepāja.** White sand beach, swimming areas, cafes, water sports, swimming area for people with disabilities. ĻLiepāja, liepaja.travel •A3
- Craftsmen Quarter.** A place where guests can observe the creation of traditional clothing, objects and jewellery, as well as see the longest amber bead necklace in Latvia. ĻDārza iela 4/8, Liepāja, +371 26541424 •A3
- Liepāja Holy Trinity Cathedral.** The cathedral is home to the largest mechanical organ in the world. The observation tower is also open to visitors. ĻLiela iela 9, Liepāja, +371 20006370, trinitatis.lv •A3
- Great Amber Concert Hall.** Excellent acoustics and contemporary architecture. Modern premises for high-quality artistically cultural events, exhibitions. Guided tours. ĻRadio iela 8, Liepāja, +371 63424555, lielaisdzintars.lv •A3
- The interior museum "Madame Hoyer's Guest House".** Authentic decor, furniture, and household items. Pub and confectionery. ĻKungu iela 24, Liepāja, +371 29570855, liepajasmuzejs.lv •A3
- Zirgu Island.** A walking trail (4 km) with viewing platforms on the lake and a bird-watching tower is available for tourists, as well as the Nature House, where you can get acquainted with environmental science. ĻZirgu sala 2, Liepāja, +371 26644834, liepaja.travel •A3
- Karosta.** The largest historical military territory in the Baltics, where guests can view fortification structures and Karosta's peculiar architecture. ĻLiepāja, +371 26369470, liepaja.travel •A3
- Beberliņi recreation Park.** Available for enthusiasts of active recreation: orienteering course, obstacle course, adventure park, SUP board and boat rental, swimming area, and picnic spots. ĻLibiēšu iela 2/6, Liepāja, liepaja.travel •A3
- Oskars Kalpaks Museum and Memorial Site "Airitēs".** A museum has been established at the memorial site of Colonel O. Kalpaks, featuring an exhibition on the life and destiny of O. Kalpaks. The site includes a park with recreational areas and a rope course. Ļ"Airitēs", Zirņu pagasts, Saldus novads, +371 22017465, karamuzejs.lv •B3
- Airīte Station.** A place where trains no longer stop, but visitors can still see an exposition on railways in Kurzeme, the restored interior of the station and historical testimonies. ĻZirņu pagasts, Saldus novads, +371 29503503, facebook.com/airitestation •B3
- Film & Photography History Collection in the Žiki Farmstead.** An impressive exhibition on the history of film and photography equipment. Visitors can also see ostriches and get acquainted with countryside life at the farmstead. Ļ"Žiki", Zirņu pagasts, Saldus novads, +371 29265183 •B3
- J. Rozentāls History and Art Museum in Saldus.** An impressive exhibition on the history of film and photography equipment. Visitors can also see ostriches and get acquainted with countryside life at the farmstead. ĻStriķu iela 22, Saldus, +371 26193485, muzejs.saldus.lv •C3
- Kapeller House.** Offers creative workshops, interactive games for visitor groups, as well as excursions around Saldus. Home to the pottery workshop "Podnīca". ĻStriķu iela 7, Saldus, +371 26567762 •C3
- Saldus Sign at the Viewing Area on Bīļu Hill.** An impressive view of Saldus castle mound, lake and town from the viewing area on Bīļu Hill with a large-scale Saldus sign. An especially popular place for taking photos. ĻSaldus, +371 63807443, turisms.saldus.lv •C3
- Ciecere Lake Viewing Tower.** Visit the 18.4 m high observation tower on the shore of Lake Ciecere, next to which is located a landscaped area with benches and a picnic spot, as well as a swimming area. Ļ"Saurietis", Cieceres pagasts, Saldus novads, turisms.saldus.lv •C3
- Brocēni Forest Park and Air Trails.** Free-entry active recreation area with walking trails, outdoor gym installations, picnic areas and two rope tracks. ĻBrocēni, Saldus novads, +371 24933055, turisms.saldus.lv •C3
- Kalni Community Centre and Nature Trail.** Climb onto the roof of Kalni Community Centre and see Kalni Nature. Trail together with the "Green Witches of Kalni". Catering also available if ordered in advance. ĻKalni, Nīgrandes pagasts, Saldus novads, +371 26361275 •B4
- Jaunauce Castle.** Offering tours of the castle and manor park, as well as the opportunity to see the only classiscist-style dome painting in Latvia. ĻJaunauce, Saldus novads, +371 26014296, jaunaucespils.lv •C4



Sailing in Courland

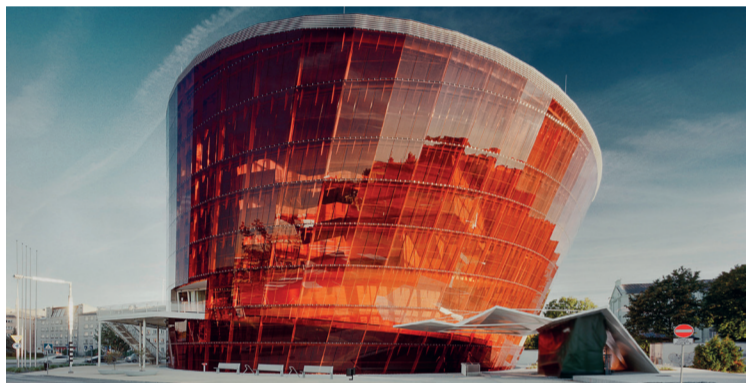


Here you will find a map and catalogue of the marina network with detailed information on all marinas in Latvia and Estonia.

EDEN - the most excellent tourist destinations in Europe



Kuldīga 45 46 47 www.visitkuldiga.com
Oldtown inscribed in UNESCO World Heritage List (2023)



Liepāja 55 56 57 58 59 60 61 62 www.liepaja.travel
European Capital of Culture 2027

Tourist information centres

- Aizpute.** Atmodas iela 16, Aizpute, +371 28617307, aizpute@dienvidkurzeme.travel, dienvidkurzeme.travel -A3
- Aisunga.** Skolas iela 11a, Aisunga, +371 26425015, muzejs@aisunga.lv, aisunga.lv -A2
- Dundaga.** Dundagas pils, Pils iela 14, Dundaga, +371 29444395, tic@dundaga.lv, visit.dundaga.lv -B1
- Engure.** Jūras iela 114, Engure, +371 24400170, +371 29103813, tip.engure@tukums.lv, engure.lv -D2
- Embūte.** Embūte-1, Embūte, +371 26626307, embute@dienvidkurzeme.travel, dienvidkurzeme.travel -B3
- Grobiņa.** Dzērves laukums, Grobiņa, +371 22024940, info@dienvidkurzeme.travel, dienvidkurzeme.travel -A3
- Jaunpils.** "Ergēlnieki", Jaunpils, +371 26443814, jaunpils.lv -C3
- Kandava.** Odens iela 2, Kandava, +371 28356520, tickandava@tukums.lv, kandava.lv -C2
- Kolka.** "Pasnietieki", Kolka, +371 29402093, lsn@kolka.lv, visitkolka.com -C1
- Kolkasrags.** Kolka, +371 29149105, kolkacape@inbox.lv, kolkasrags.lv -C1
- Kuldīga.** Baznīcas iela 5, Kuldīga, +371 29334403, tourinfo@kuldiga.lv, visitkuldiga.com -B2
- Liepāja.** Rožu laukums 5/6, Liepāja, +371 63480808, 29402111, info@liepaja.travel, liepaja.travel -A3
- Liepāja (Karosta).** Invalīdu iela 4, Liepāja, +371 26369470, info@karostascietums.lv, karosta.lv -A3
- Mērsrags.** Zvejnieku iela 2, Mērsrags, +371 63237704, tic.mersrags@talsi.lv, visittalsi.com -C2
- Nica.** "Pienotava", Nica, +371 29458532, nica@dienvidkurzeme.travel, dienvidkurzeme.travel -A4
- Pāvilosta.** Dzintaru iela 1, Pāvilosta, +371 29121894, pavilosta@dienvidkurzeme.travel, dienvidkurzeme.travel -A3
- Priekule.** Aizputes iela 1a, Priekule, +371 26132442, priekule@dienvidkurzeme.travel, dienvidkurzeme.travel -A4
- Roja.** Selgas iela 14E, Roja, +371 28630590, tic.roja@talsi.lv, visittalsi.com -C1
- Rucava.** "Centra Dzinavas", Rucava, +371 63124451, 28311557, tic@tukums.lv, visittukums.lv -C2
- Sabīle.** Strautu iela 4, Sabīle, +371 27841827, tic.sabile@talsi.lv, visit.sabile.lv -C2
- Saldus.** Striķu iela 3, Saldus, +371 63807443, tic@saldus.lv, turisms.saldus.lv -C3
- Skrunda.** Ventas iela 14, Skrunda, +371 26121374, tuac@skruna.lv, skruna.lv -B3
- Brocēni.** Lielceceres iela 3, Brocēni, +371 22777103, viviana.blumberga@saldus.lv, turisms.saldus.lv -C3
- Talsi.** Lielā iela 19/21, Talsi, +371 26469057, tic.talsi@talsi.lv, visittalsi.com -C2
- Tukums.** Talsu iela 5, Tukums, +371 63124451, 28311557, tic@tukums.lv, visittukums.lv -C2
- Valdemārpils.** Raina iela 14A, Valdemārpils, +371 25486793, tic.valdemarpils@talsi.lv, visittalsi.com -C1
- Ventspils.** Dārzu iela 6, Ventspils, +371 29232226, tourism@ventspsils.lv, visitventspsils.com -A1
- Ziemepe.** "Ziemepe", Jūras māja 3, Ziemepe, +371 29437166, ziemepe@dienvidkurzeme.travel, dienvidkurzeme.travel -A3



Ventspils	Tukums	Talsi	Saldus	Rīga	Liepāja	Kuldīga	Jūrmala
125	56	83	119	215	91	137	
76	72	83	119	215	91	137	
184	63	83	119	215	91	137	
111	72	83	119	215	91	137	
184	63	83	119	215	91	137	
119	168	145	98	215	91	137	
58	96	58	52	155	201	137	
166	45	85	105	23	91	137	

Distance between cities (km)

- 1 Tourist attraction
- I Tourist information centre
- Euro Velo 13 Euro Velo 10
- Main road
- Regional roads
- Other roads
- Railway
- Asphalted road
- Gravel road
- Earth road
- National park, nature reserve
- Borders of National parks and reserves

Cycling itineraries

- Eurovelo 10 Around the Baltic Sea 490 km
- Eurovelo 13 Iron Curtain 390 km
- 10 Baltic Sea Cycle Route
- 13 Iron Curtain Trail

- 552 Valguma Cycling Trails 14-22 km
 - 553 Around Lake Engures 65 km
 - 573 Jaunpils Big Circle 35 km
 - 574 Circle of Tukums Castles 29 km
 - 554 Talsi Hillcock 25 km
 - 555 Abavas Ancient Valley 36 km
 - 562 Sulti 56 km
 - 563 Ventas Valley 39 km
 - 564 River Riežupe 39 km
 - 565 Gazing at ostriches 47 km
 - 569 Border Area of Regions Auces and Saldus - Manors and Castles 56 km
 - 572 Along Lavender Fields 71 km
 - 571 Pāvilostas Sea Bicycle 79 km
 - 585 Grobiņas Velobānis Cycling Road 20 km
 - 556 Baron Bōgans 36 km
 - 557 Kolka Circle 50 km
 - 558 Liv Villages and Narrowgauge Railway Nature Trail 27 km
 - 559 Around Lake Usmas 48 km
 - 560 Around Lake Būsnieku 20 km
 - 561 River Venta 95 km
 - 568 Around Lake Pape 32 km
 - 580 Priekule Vicinity Cycling Itineraries 19-58 km
 - 584 Liepāja: Karosta 12 km
- www.velokurzeme.lv

Suggested itineraries



Long-distance hiking trails
Long-distance hiking trails iBaltic Coastal Hiking is part of the European long-distance hiking route E9 along the Baltic Sea, leading along the coast of Latvia, Lithuania and Estonia.
Baltic Forest Hiking is part of the European long-distance hiking route E11 in the Baltic states, leading through the most beautiful forests and national parks.
www.baltictrails.eu



Motorist routes
Nature trails in Kurzeme:
Balt's road:



Boating routes
Boating routes, water tourism maps, events and useful tips.
www.upesgaja.lv

Industrial heritage in Courland



Industrial heritage tourism is an excellent opportunity to get acquainted with ancient production facilities, equipment and skills required for their use. Industrial heritage tourism allows us to discover more.
www.industrialheritage.travel

Tourism association of Kurzeme recommends

Advance booking required
-A1 Quadrant
www.kurzeme.lv